

7 PRODUCT CATALOG

TM TECH

TMTECH[®] SMART TELECOM SOLUTIONS

ZERO INTERFERENCE. BUILT FOR
PERFORMANCE. BACKED BY INSTALLERS.

SNAP-INS THAT WORK

DURABLE POLYMER CABLE
SUPPORT SYSTEMS FOR
WIRELESS INFRASTRUCTURE

MADE IN THE USA |
DESIGNED FOR HARSH
ENVIRONMENTS |
PIM-SAFE PERFORMANCE

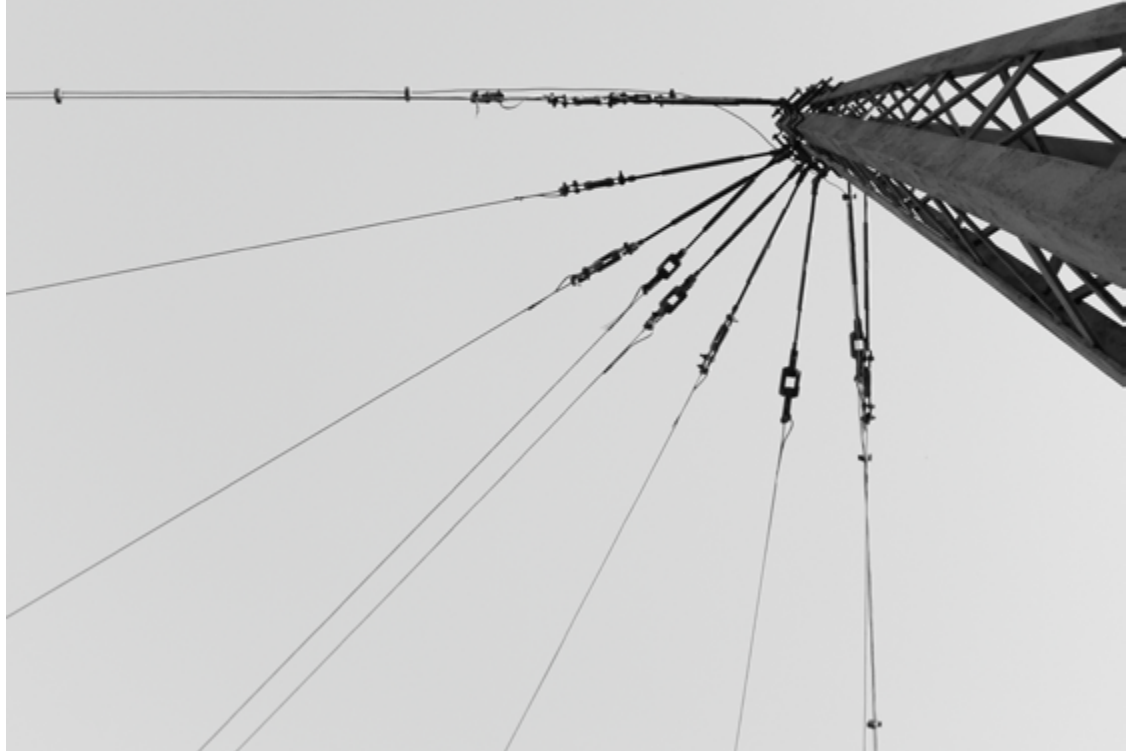


COMPANY & PRODUCT PHILOSOPHY

02/08

BUILT BY TOWER PROFESSIONALS - FOR TOWER PROFESSIONALS

We don't build showpieces. We build solutions that hold strong in the harshest telecom conditions. Designed by engineers for low PIM interference and long lasting durability.



TMTECH was founded by experienced tower engineers who have worked in the field and faced real-time problems. Our Snap-in cable holders and mounting brackets are the result of years spent in extreme conditions — and they're engineered accordingly.

Each product is:

FieldTested for durability and performance in real-world tower environments.

PIMSafe with non-metallic construction to support modern wireless applications.

Manufactured in the USA using advanced injection molding techniques and high-grade polymers.

Snap-in Cable Holder System — Performance Specifications

Our Snap-in cable holders are built for use with various cables that may be affected by PIM interference. They are constructed from flame-retardant, UV-stabilized ABS with a no-grommet design, ensuring fast installation and longterm resilience in harsh outdoor environments.

Key Features:

Material: UV-stabilized ABS (equivalent to LG Chem AF366A)

Mount Size: Standard 3/4" (19.25 mm)

Operating Temp: -49°F to +185°F

UV Stability: Tested to ≥1250 hours accelerated exposure

Flame Retardant: UL94 V0 rating

Stackable: Up to 4 units per mounting point

Installation: Tool-free Snap-in with firm cable retention

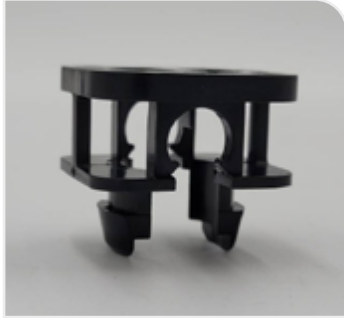
Applications: Coax, fiber, power jumpers (AWG 8–12), hybrid

**All TMTECH Snap-in holders are vibration tested and rated for consistent outdoor deployment.*



MODEL RANGE - SNAP-IN CABLE HOLDERS

TM-S7



Cable Ø:
4.0 — 7.0 mm

Application:
Fiber optic jumpers, coax

Dimensions:
27.2 mm H × 31 mm W

TM-S10

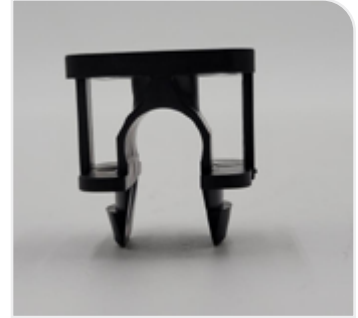


Cable Ø:
7.0 — 10.0 mm

Application:
Fiber jumpers

Dimensions:
27.5 mm H × 31 mm W

TM-S12



Cable Ø:
11.0 — 13.5 mm

Application:
10—8 AWG DC jumpers

Dimensions:
33.6 mm H × 31 mm W

Common Specs (All Models):

Material: UV-stabilized ABS

Stackable: Yes, up to 4 high

Mount Compatibility: Universal 3/4" ports

UV Resistance: ≥1250 hrs

Temp Range: -49°F to +185°F



LARGER & DUAL SLOT SNAP-IN MODELS

TM-S16

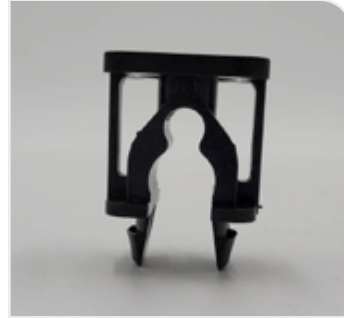


Cable Ø:
14.5 — 16.5 mm

Application:
1/2" RF jumpers

Dimensions:
37.1 mm H × 31 mm W

TM-SD1012 (DualSlot)



Cable Ø:
8.0—10.0 mm + 11.0—13.5 mm

Application:
Hybrid setups (fiber + DC power)

Dimensions:
41.6 mm H × 31 mm W

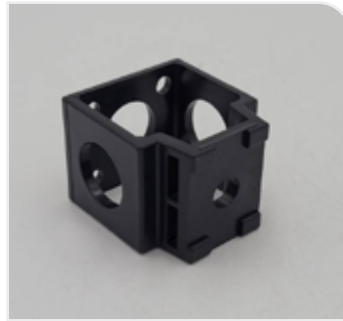
Cables Held: 2

These models maintain the same SNAP-IN compatibility and no-grommet design for fast, secure field installs. Suitable for combined routes or thicker cable types requiring high clamping force and UV stability.

3 WAY BRACKET SOLUTIONS

Universal Mount Brackets: TMA01 & TMA02

These brackets are designed to support up to 3 Snap-Ins per unit, with optimized structure for high-strength mounting on towers, poles, or flat surfaces using a titting nut. Built using engineered glass-filled polyamide.



	TMA01 (Compact):	TMA02 (Wide):
Dimensions:	46.2 mm H × 33.8 mm L × 41.7 mm W	38.0 mm H × 42.0 mm L × 84.0 mm W
Mounting:	Cable straps or 3/8" bolt/stud	Cable straps or 3/8" bolt/stud
Max Stack:	4 Snap-In clips	4 Snap-In clips

Shared Specs:

Material: UV-stabilized glass-filled PA

UV Resistance: ≥1500 hours

Operating Temp: -50°F to +185°F

PIM Performance: Nonmetallic, low reflectivity

Color: Black

MATERIAL PROPERTIES & COMPLIANCE

07/08



Snap-In Material: ABS LG AF366A (Equivalent)

Tensile Strength: 43 MPa

Flexural Modulus: \sim 2200 MPa

Impact Resistance: 300 J/m

UL Rating: UL94 V0

Moisture Absorption: \sim 0.3%

Temp Resistance: -60°C static

3Way Bracket Material: GlassFilled PA (Equivalent to Grilon BG30)

Tensile Strength: \sim 195 MPa

Flexural Modulus: \sim 9000 MPa

Heat Resistance: $120-130^{\circ}\text{C}$

Moisture Absorption: \sim 1.5%

**All materials used in TMTECH products are certified to industry-standard test protocols, ensuring longterm field reliability.*

TM TECH

AMERICAN ENGINEERED CABLE SUPPORT SYSTEMS

**DURABILITY.
SIMPLICITY.
PERFORMANCE.**

Built for towers across the
U.S., tested where it matters
most — in the field.



TM TECH, LLC

✉ INFO@TMTECH-US.COM

🔗 WWW.TMTECH-US.COM

📞 +1 404 575 1995

📍 BASED IN THE USA

Every component we build
has one goal: Make installation
faster, performance stronger,
and interference zero.

**TM-TECH is built by the field
— for the field.**